

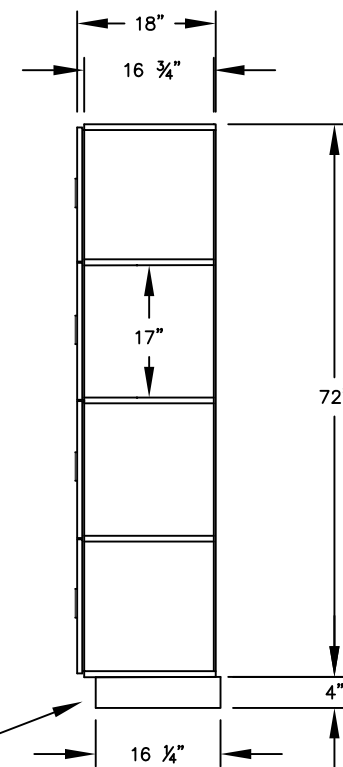
(NOTE: DESIGNER LOCKER
SHOWN WITHOUT SIDE PANEL
OR SLOPING HOOD. PLEASE
ORDER SEPARATELY.)

MODEL #34368
FOUR TIER
DESIGNER LOCKER — 3 WIDE

(12) LOCKER COMPARTMENTS
EACH COMPARTMENT:
10 $\frac{3}{4}$ " W x 17" H x 16 $\frac{3}{4}$ " D

(BASES ARE MADE OF INDUSTRIAL GRADE
PARTICLEBOARD AND ARE COVERED IN A
DURABLE BLACK LAMINATE. PLEASE SET
BASE TO ALLOW $\frac{5}{8}$ " BETWEEN THE BACK OF
THE LOCKER AND THE WALL FOR AIR
VENTILATION.)

SIDE VIEW



MODEL #34368

12" WIDE FOUR TIER
DESIGNER WOOD LOCKER
SIX FEET HIGH (ADD 4" FOR BASE)

AVAILABLE FINISHES: GRAY, BLUE, BLACK,
MAPLE, CHERRY OR MAHOGANY

DRAWN: 07/18

***Established in 1936, Salsbury Industries is the industry
leader in manufacturing and distributing quality lockers.***

1010 E. 62ND STREET
LOS ANGELES, CA 90001
PHONE: (800) 562-5377
FAX: (800) 562-5399
email: engineering@lockers.com