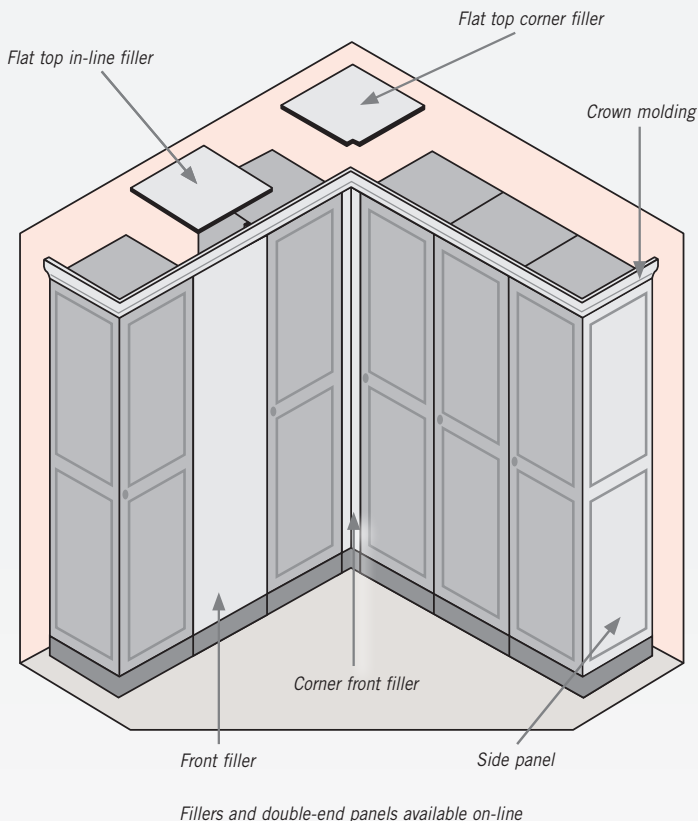


# Solid Oak Locker Options & Locks

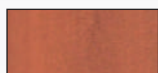
for lockers on pages 90-92



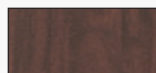
<sup>1</sup> Specify



light oak



medium oak



dark oak

## SIDE PANELS AND CROWN MOLDING

Side panels and crown molding easily attach to solid oak executive lockers and provide a finished look to an individual locker or a row of lockers.

### SIDE PANELS

MODEL	DESCRIPTION	WEIGHT	PRICE
11133 <sup>1</sup>	Side panel - raised - solid oak - for 18" deep lockers	15 lbs.	\$250.00
11135 <sup>1</sup>	Side panel - raised - solid oak - for 21" deep lockers	20 lbs.	\$275.00
11137 <sup>1</sup>	Side panel - raised - solid oak - for 24" deep lockers	25 lbs.	\$300.00

### CROWN MOLDING

MODEL	DESCRIPTION	WEIGHT	PRICE
11156 <sup>1</sup>	Crown molding: 72" W x 4" H Six (6) foot length with straight edges	15 lbs.	\$125.00

## FILLERS

Fillers are an ideal option for locker installations that encounter obstructions such as pipes, columns and other obstacles. Corner and in-line flat top fillers overlay gaps between the existing locker units and are easily attached providing a professional appearance to the locker installation. Locker fillers can be easily field cut for custom installations.

### TOP FILLERS - IN-LINE

MODEL	DESCRIPTION	WEIGHT	PRICE
11148 <sup>1</sup>	Flat top filler - in-line - for 18" deep lockers	3 lbs.	\$50.00
11141 <sup>1</sup>	Flat top filler - in-line - for 21" deep lockers	4 lbs.	\$60.00
11144 <sup>1</sup>	Flat top filler - in-line - for 24" deep lockers	5 lbs.	\$70.00

### TOP FILLERS - CORNER

MODEL	DESCRIPTION	WEIGHT	PRICE
11138 <sup>1</sup>	Flat top filler - corner - for 18" deep lockers	4 lbs.	\$60.00
11131 <sup>1</sup>	Flat top filler - corner - for 21" deep lockers	5 lbs.	\$70.00
11134 <sup>1</sup>	Flat top filler - corner - for 24" deep lockers	6 lbs.	\$80.00

### FRONT FILLERS - VERTICAL

MODEL	DESCRIPTION	WEIGHT	PRICE
11169 <sup>1</sup>	Front filler - vertical - 9" wide - 72" high	10 lbs.	\$100.00
11165 <sup>1</sup>	Front filler - vertical - 15" wide - 72" high	15 lbs.	\$125.00
11167 <sup>1</sup>	Front filler - vertical - corner - 72" high	5 lbs.	\$75.00

## ADDITIONAL COMPARTMENT SHELVES (not pictured)

MODEL	DESCRIPTION	WEIGHT	PRICE
11198 <sup>1</sup>	Compartment shelf - full depth - for 18" deep lockers	5 lbs.	\$30.00
11191 <sup>1</sup>	Compartment shelf - full depth - for 21" deep lockers	6 lbs.	\$35.00
11194 <sup>1</sup>	Compartment shelf - full depth - for 24" deep lockers	7 lbs.	\$40.00



For ADA Compliance Guidelines visit: [www.lockers.com/ADA-Solid-Oak-Executive-Lockers](http://www.lockers.com/ADA-Solid-Oak-Executive-Lockers)

## SOLID OAK EXECUTIVE WOOD LOCKER LOCKS & NAME / NUMBER PLATES

MODEL	DESCRIPTION	PRICE
11160	Name / number plate - 2-1/2"W X 7/8"H - gold finish - engraved	\$3.00
11115	Built-in cylinder lock - gold finish with (2) keys - replacement	\$15.00
11116	Master control key - for built-in cylinder lock #11115	\$10.00
11120	Combination padlock - includes a gold finish hasp	\$20.00
11121	Master control key - for combination padlock #11120	\$10.00
11125	Key padlock - includes a gold finish hasp	\$20.00
11129	Key blanks - for #11125 key padlocks - box of (50)	\$35.00
11123	Built-in hasp - gold finish - for user provided padlock	\$15.00
11117	Wire pull - gold finish	\$10.00
11118	Knob pull - gold finish	\$10.00
11119	Thumb latch - gold finish	\$10.00
11190	Electronic lock (specify: silver, black or gold finish)	\$65.00



#11160  
Name / number plate



#11115  
Built-in cylinder gold finish lock with (2) keys



#11120  
Combination padlock with gold finish hasp



#11125  
Key padlock with gold finish hasp



#11123  
Built-in hasp with gold finish



#11117  
Wire pull - gold finish



#11118  
Knob pull - gold finish



#11119  
Thumb latch - gold finish



#11190  
Electronic lock (silver, black or gold finish)  
For single or multi-use applications.