

Modular Lockers

MODULAR LOCKERS VENTED AND SEE-THROUGH

Made of 16 gauge steel, Salsbury fully assembled modular lockers are available with vented doors (80000 series) or see-through doors (81000 series). Modular lockers are available in a 12" cube and a 15" cube and offer versatility for any installation. The vented modular lockers effectively combine visibility and air flow while the see-through modular lockers feature a clear polycarbonate door offering maximum visibility. Available in a gray, tan or blue powder coated finish, modular lockers are ordered individually or in groups to fit your specific requirements. The flexibility of the modular locker design allows the units to be connected vertically and horizontally with the stainless steel hardware (included). The back of each modular locker has four (4) key holes for ease when mounting on a wall. All modular lockers include a padlock hasp for secure storage. Optional sloping hoods, bases, coat rods, custom identification systems and locks are available as options upon request - see modular locker options and locks on page 59.

**Volume Discount Pricing
Available at Lockers.com!**



#81012 with custom window engraving (#88868) displayed



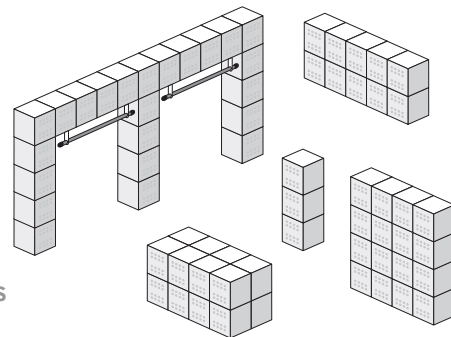
#80015 with optional base (#88835) displayed



#81015's with optional sloping hoods (#88855), bases (#88835) and combination padlocks (#88820) displayed

Ideal for:

- Schools
- Factories
- Offices
- Locker Rooms
- Garages
- Storage Closets



Sample configurations of modular lockers displayed

WALL MOUNTED MODULAR LOCKERS VENTED AND SEE-THROUGH

Constructed of 16 gauge steel, Salsbury fully assembled wall mounted modular lockers are available with vented doors (#80000 series) or see-through doors (#81000 series) and include four (4) 12" W x 12" H compartments and a 45" W x 3/4" diameter silver finish coat rod. Wall mounted modular lockers are available in a durable gray, tan or blue powder coated finish. The back of the unit has key holes for ease when mounting. See modular locker options and locks on page 59.



80048

Wall mounted modular lockers with vented doors (#80048) and optional built-in key locks (#88815) displayed



81048

Wall mounted modular lockers with see-through doors (#81048) and optional combination padlocks (#88820) displayed

DESCRIPTION

80048¹ - Wall Mounted Modular Lockers With Vented Doors

UNIT SIZE

48" W x 12" H x 12" D

WEIGHT

70 lbs.

PRICE

\$425.00

DESCRIPTION

81048¹ - Wall Mounted Modular Lockers With See-Through Doors
window: 7-1/2" W x 7-1/2" H

UNIT SIZE

48" W x 12" H x 12" D

WEIGHT

70 lbs.

PRICE

\$525.00

VENTED LOCKERS

SEE-THROUGH LOCKERS



80012

DESCRIPTION

80012¹ - 12" Cube Modular Locker with Vented Door

UNIT SIZE

12" W x 12" H x 12" D

WEIGHT

15 lbs.

PRICE
\$110.00



80015

DESCRIPTION

80015¹ - 15" Cube Modular Locker with Vented Door

UNIT SIZE

15" W x 15" H x 15" D

WEIGHT

20 lbs.

PRICE
\$135.00



81012

DESCRIPTION

81012¹ - 12" Cube Modular Locker with See-Through Door
window: 7-1/2" W x 7-1/2" H

UNIT SIZE

12" W x 12" H x 12" D

WEIGHT

15 lbs.

PRICE
\$135.00



81015

DESCRIPTION

81015¹ - 15" Cube Modular Locker with See-Through Door
window: 9-3/8" W x 9-3/8" H

UNIT SIZE

15" W x 15" H x 15" D

WEIGHT

20 lbs.

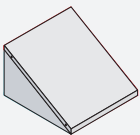
PRICE
\$160.00

MODULAR LOCKER OPTIONS & LOCKS

SLOPING HOODS

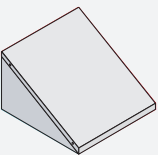
88852¹ Sloping hood

- for 12" modular lockers
- 12" W x 6" H x 12" D
- 3 lbs.
- \$15.00



88855¹ Sloping hood

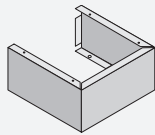
- for 15" modular lockers
- 15" W x 6" H x 15" D
- 5 lbs.
- \$20.00



BASES

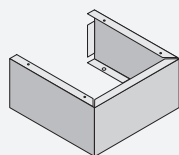
88832¹ Base

- for 12" modular lockers
- 12" W x 6" H x 12" D
- 3 lbs.
- \$15.00



88835¹ Base

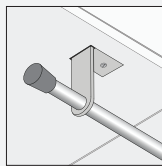
- for 15" modular lockers
- 15" W x 6" H x 15" D
- 5 lbs.
- \$20.00



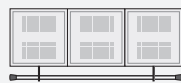
COAT ROD

88888 Coat rod - silver finish

- for (4) 12" or (3) 15" modular lockers
- 45" W x 3/4" diameter
- 4 lbs.
- \$20.00



Coat rod shown with 12" lockers (includes mounting hardware)



Coat rod shown with 15" lockers (includes mounting hardware)

CUSTOM IDENTIFICATION

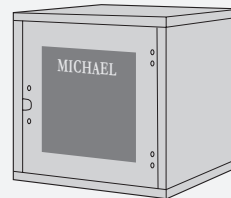
88860 Name / number plate - engraved

- 2-1/4" W x 1-3/8" H
- \$3.00



88868 Custom window engraving

- for 81000 series locker
- up to (12) 1" high characters
- \$20.00



LOCKS

- 88810 Built-in combination lock**
- for 80000 series only
 - \$15.00



- 88811 Master control key**
- for built-in combination lock #88810
 - \$10.00

- 88815 Built-in key lock with (2) keys**
- for 80000 series only
 - \$15.00



- 88816 Master control key**
- for built-in key lock #88815
 - \$10.00

- 88820 Combination padlock**
- for 80000 and 81000 series
 - \$10.00

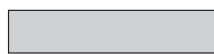


- 88821 Master control key**
- for combination padlock #88820
 - \$10.00

- 88825 Key padlock with (2) keys**
- for 80000 and 81000 series
 - \$10.00



¹ Specify



gray



tan



blue